

CRANFORD

*Up to Date,
Down to Earth*

Pull-Out
Section

An **Our Town** Special by **EDGE**[®]
Magazine

KNOW GREATER VALUE®

Greater financial and reputational risk. Increasingly complex reporting needs. The challenges facing high-net worth individuals and wealthy families have never been greater.

The Family Office professionals at PKF O'Connor Davies know that in this environment clients need more, expect more and, quite frankly, they deserve more. That's why we continually push to deliver greater insights, greater service and create greater partnerships — and that means greater value for our clients.

It's no coincidence we've long been the trusted advisor for affluent individuals, multi-generational families, business owners and executives, single and multi-family offices, entertainers and professional athletes.

From wealth preservation to lifestyle management, our clients know they can always count on us to deliver more.

PKF O'Connor Davies Family Office.
Know Greater Value®



Gemma Leddy, Partner
914.341.7073
gleddy@pkfod.com

www.pkfod.com

EDGE

inside

Up to Date,
Down to Earth

C3

So You Think You
Know Cranford?

C9

This is a supplement of EDGE® Magazine, for further information call (908) 994-5138.



Special thanks to Tg Glazer, Dottie Baniewicz and everyone at **Cranford Area Chamber of Commerce** for their input, assistance and support.

Cover & Downtown photo: Cranford Area Chamber of Commerce



DELICIOUS FOOD TO FIT YOUR LIFESTYLE

100 STEPS



www.100stepsrawbar.com

From the fisherman, butcher and farmer, we always seek the best ingredients, wherever they might be found. Make your next dinner an experience worth remembering. 100 Steps is BYOB

Call to reserve your table or to book your private social and corporate events.

- Happy Hour Specials
- Jazz Night every other Wednesday
- 3-Course Prix Fixe Menu | \$39 per person | Wednesday & Thursday
- Voted Top 25 New Restaurants in NJ, 2017
- Voted #1 Seafood Restaurant in Northern Jersey, 2018



908-276-0153 | 215 CENTENNIAL AVE, CRANFORD, NJ 07016

BEATING CANCER IS IN OUR BLOOD.

#TeamInTraining

TEAM IN TRAINING

800-482-TEAM | TeamInTraining.org

The Leukemia & Lymphoma Society is at the forefront of the fight to cure cancer. Through Team In Training, the largest charity endurance program, money is raised to fund pioneering research that saves lives.

Support new cures for cancer. Join Team In Training. Follow our #TeamInTraining journey.

Use coupon code **EDGE** for free Team In Training registration (\$100 value).

LEUKEMIA & LYMPHOMA SOCIETY | TEAM IN TRAINING



Kevin Papa



Kevin Papa



Cranford Area Chamber of Commerce

Up to Date *Down to Earth*

Our Town...Cranford

Sylvan. Urban. Suburban. Spend a day in Cranford and you'd be hard-pressed to describe it in just one word. Those three words are a good start, however. The town's combination of landscape and lifestyle has brought together 23,000 residents who share a unique slice of life in the Garden State.

Another word that comes to mind? *Community.*

Perhaps more than any other quality, this is what sets Cranford apart from its neighbors. It is close-knit, vibrant and diverse in age, income, and ethnicity. Residents actively embrace those differences and, according to Tg Glazer, president of the Cranford Area Chamber of

Commerce, it is this spirit that helps to define Cranford's busy, walkable downtown, which the *Star-Ledger* named New Jersey's best in 2018.

"Our town center is a great place to work, eat, shop and come together for events," Glazer explains. "It



Kevin Papa



Kevin Papa

is an important part of the greater community. Residential and commercial co-exist and support each other. You don't see a lot of chain businesses in Cranford, either. A great many are locally owned and operated, which makes us somewhat unique and definitely contributes to the charm."

The people of Cranford are unusually committed to the town, he adds: "So many are lifelong residents...they were raised here, went off to college, started families and decided to move back. They love the place where they grew up."



Kevin Papa

That dynamic has helped to define the town's character and growth. The population doubled during the two decades after World War II, mirroring the suburban exodus during that era. Unlike many of its neighbors, however, Cranford held more or less steady in the years that followed. It maintained a reasonable balance between residential and commercial growth that both preserved its history and also made way for sensible development. Currently, the south side of Cranford is undergoing something of a transformation, specifically near the train station.

That station has long been a key to Cranford's success. Cranford has been a "commuter" town for

New year, new look! Check us out!

THE THIRSTY TURTLE
A CONTEMPORARY CAFE

1-7 S. Ave E.
Cranford, NJ 07016
908-324-4140
www.thirstyturtle.com

f t i



Kevin Papa



Kevin Papa



Kevin Papa



ANNOUNCING THE TRINITAS DIALYSIS CENTER AT CRANFORD

Trinitas, an area leader in the diagnosis and treatment of renal disease, is proud to announce a brand new dialysis facility in partnership with Cranford Rehab and Nursing Center. Operated by the highly skilled and compassionate staff of nephrologists, nurses and technicians from Trinitas, our new facility provides in-house care to both residents of Cranford Rehab and Nursing Center and the general community. Featuring 9 dialysis stations, this new center continues Trinitas' 40-plus year commitment to patients with renal disease.



To access these dialysis services for you or a loved one,
please call (908) 272-6660.

Cranford Rehab and Nursing Center
205 Birchwood Ave. • Cranford, NJ 07016

generations, contributing greatly to the area's affluence, stability and sophistication. Indeed, some of the most engaging retail shops and finest restaurants in Union County fall within its borders.

Cranford's quality of life transcends dining and shopping convenience, of course. Residents enjoy a variety of outdoor recreation possibilities, including Nomahegan Park near Union County College and Rahway River Park, a picturesque greenway created in the 1920s by the sons of Frederick Law Olmstead. Indeed, it is Cranford's natural allure and the thoughtful stewardship of its resources that, as much as anything, ensures a bright future as other suburban enclaves struggle to find balance in an era of rapid change. **EDGE**



Kevin Papa

Heating Problems Again? Need a 2nd Opinion?

Do you have a **large heating or AC repair estimate** from another HVAC licensed contractor? **Or were you told you need a complete new furnace for \$1000's of \$\$?**

Why not call Reel-Strong Heating & Cooling for a **'Free, no obligation' 2nd opinion?** Just show us their 'written estimate'. We will check your system and give you our **written 2nd opinion estimate**. If we agree with their proposals – **then great** – proceed with either company and you will feel better with your decision.

If there is a big difference in our two estimates, we will explain why and review your options. We will guide you to make the right decisions and one you are most comfortable with.

"Big enough to serve...small enough to care."

WINTER SPECIAL
\$300 OFF
Any new Rheem heating or AC system

Cannot be combined with any other offers.
 Expires 3/31/18

SAVE THIS COUPON
\$25 OFF
Any Service Call

Cannot be combined with any other offers.
 Not to be used for routine maintenance.
 Never Expires.

REEL-STRONG
HEATING & COOLING

ESTABLISHED 1925

549 Lexington Avenue, Cranford

908-276-0900

or 888-480-0901

www.reel-strong.com

0% Financing Available

FREE Estimates



License #19HC00438000



Photos by Kevin Papa

So You Think You Know Cranford?

1. The official seal of Cranford depicts...

- a. A Crane
- b. A Plow
- c. A Mill
- d. All of the above

2. The *Cranford Chronicle* was once owned by publishing mogul...

- a. J. Walter Thompson
- b. Bernie Wagenblast
- c. Max Frankel
- d. Malcolm Forbes

3. Cranford's informal nickname is...

- a. The Venice of New Jersey
- b. The Paris of New Jersey
- c. The Jewel of New Jersey
- d. The Diamond of New Jersey



Cranford Chronicle



Kevin Papa



4

Editions Rencontre



5

Kevin Papa

4. Cranford hoops legend Carol Blazejowski's nickname was...

- a. The Cranford Comet
- b. Carol Burn Net
- c. The Blaze
- d. CB12

5. Cranford Hall was built in the style of...

- a. A Spanish Monastery
- b. A French Harbor Defense
- c. An English Norman Castle
- d. The Hearst Castle at San Simeon

6. In 1936, WPA workers digging north of Kenilworth Blvd. unearthed...

- a. An Egyptian Mummy
- b. A Lenape Burial Ground
- c. One Hundred Pounds of Silver Ingots
- d. Two Mastodon Tusks



6

Library of Congress



Rotary Club of Cranford



Facebook

7. In 2015, Cranford Deputy Mayor Lisa Adubato resigned to...

- a. Take a seat on the New Jersey Superior Court
- b. Co-star in the horror film *Ouija: Origin of Evil*
- c. Become General Manager of the Newark Bears
- d. Scale Mt. Everest without an oxygen tank

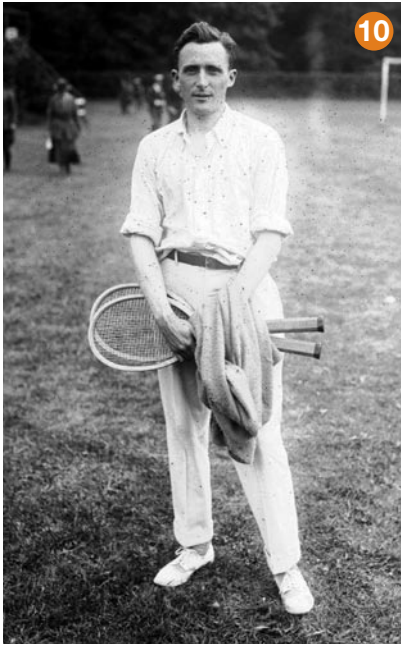
9. In 1977, Barbara Brande became Cranford's first female...

- a. Township Mayor
- b. Soccer Hall of Famer
- c. High School Principal
- d. Barbecue Champion

8. CranfordTV personality Jennifer Westhoven...

- a. Graduated from Bryn Mawr College
- b. Co-Stars with Robin Meade on *Morning Express*
- c. Failed parallel parking on her first driver's exam
- d. All of the above

**Quiz answers at the end
of page 12!**



10

National Library of France



11

Upper Case Editorial

10. Cranford tennis star Dean Mathey once reached the finals of the...

- a. Wimbledon Singles Championship
- b. Australian Singles Championship
- c. U.S. Doubles Championship
- d. French Mixed Doubles Championship

11. The first schoolhouse in Cranford was constructed in...

- a. 1785
- b. 1805
- c. 1825
- d. 1845

12. The 2005 movie *Guess Who*, shot in Cranford...

- a. Co-Starred Ashton Kutcher and Bernie Mac
- b. Featured *Welcome Back, Kotter's* Lawrence Hilton-Jacobs
- c. Was a Remake of *Guess Who's Coming to Dinner*
- d. All of the above

Some in-laws were made to be broken.

12

guesswho

Columbia Pictures



So You Think You Know Cranford...

Answers: 1 d • 2 d • 3 a • 4 c • 5 c • 6 d • 7 a • 8 d • 9 a • 10 c • 11 b • 12 d



Strong student? Apply to the American Honors program - recruiting the best and brightest students in Union County. Email honors@ucc.edu for more information.



From **Union County College** to your **Dream School**

Our students have been accepted to Columbia, Cornell, NYU, Rutgers and UCLA, among many other prestigious universities across the country.

Union offers:

- Easy transfer to top schools
- Small class sizes & flexible schedules
- A supportive community of faculty and staff



**Transforming
Our Community...
One Student
at a Time**

WWW.UCC.EDU 908-709-7518



CRANFORD, NJ

HILLSBOROUGH, NJ

TOP TIPS

Complimentary
First Lesson
& Consultation

Get
10% Discount
off beginner program

Get Ready
To Learn

Social Dancing
Competitive Ballroom
Wedding Dance Specialists
Kids Programs

LEARN TO DANCE

www.ArthurMurrayNewJersey.com

+Singles & Couples Welcome

(908) 272 7955